

- Wycliffe Plat Three -

LYING IN SECTION 25, TOWNSHIP 44 SOUTH, RANGE 41 EAST, PALM BEACH COUNTY, FLORIDA

0520-009

137

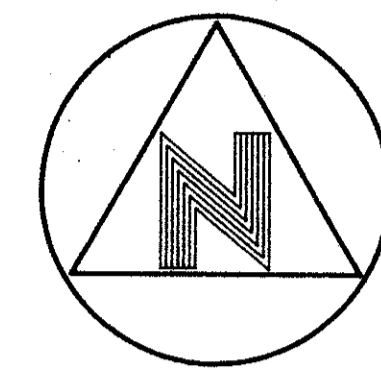
(SEE SHEET 5 of 11)

MATCH LINE

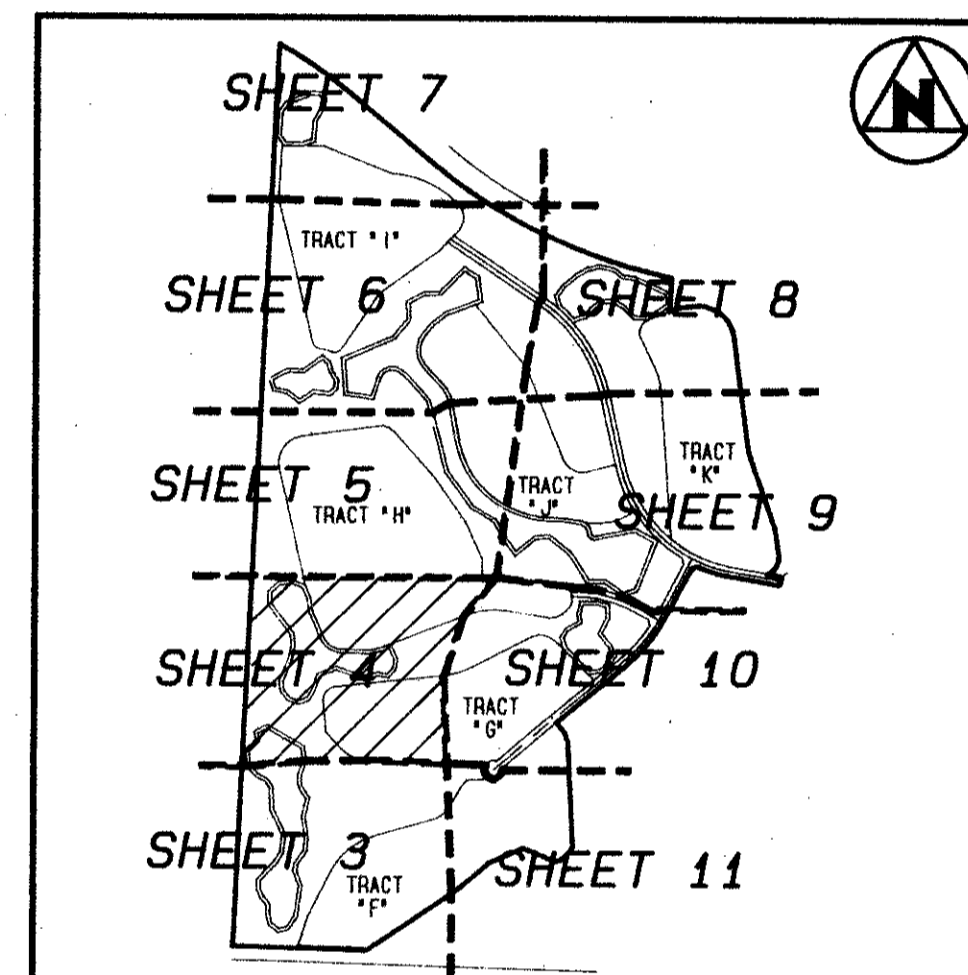
MATCH LINE
(SEE SHEET 10 of 11)

(SEE SHEET 5 of 11)

MATCH LINE



GRAPHIC SCALE



KEY MAP
(N.T.S.)

LEGEND:

- A.I.D.E. INDICATES ACME IMPROVEMENT DISTRICT EASEMENT
- C/L INDICATES CENTERLINE
- O.R.B. INDICATES OFFICIAL RECORDS BOOK
- P.C.P. ○ INDICATES A PERMANENT CONTROL POINT
- Pg. INDICATES PAGE
- Pp. INDICATES PAGE THROUGH PAGE
- P.R.M. □ INDICATES PERMANENT REFERENCE MONUMENT
- R/W INDICATES RIGHT OF WAY
- SEC. INDICATES SECTION
- MON. INDICATES MONUMENT
- P.B. INDICATES PLAT BOOK

UNPLATTED-
ACME IMPROVEMENT DISTRICT CANAL C-8
(SEE BOOK 1037, PAGE 680)

TRACT "P"

TRACT "L-19"
(2.71 Acres)
TO BE MAINTAINED BY
WYCLIFFE COMMUNITY
ASSOCIATION, INC.,
WITHOUT RECOURSE
TO PALM BEACH COUNTY.

TRACT "L-19P"
(0.60 Acres)
TO BE MAINTAINED BY
WYCLIFFE COMMUNITY
ASSOCIATION, INC.,
WITHOUT RECOURSE
TO PALM BEACH COUNTY.

TRACT "P"

TRACT "H"
SUBJECT TO REPLATTING
PRIOR TO DEVELOPMENT
(25.18 Acres)

TRACT "P"

TRACT "G"
SUBJECT TO REPLATTING
PRIOR TO DEVELOPMENT
(15.26 Acres)

TRACT "L-20"
(2.60 Acres)
TO BE MAINTAINED BY
WYCLIFFE COMMUNITY
ASSOCIATION, INC.,
WITHOUT RECOURSE
TO PALM BEACH COUNTY.

MATCH LINE
(SEE SHEET 3 of 11)

MATCH LINE
(SEE SHEET 3 of 11)

MATCH LINE
(SEE SHEET 10 of 11)

BOOK 69
PAGE 137
FLOOD MAP #100B
ZONING # 63
SE 86-104
ZIP CODE 33467
PUD MAP # 251111
SAME

69/137

THIS INSTRUMENT WAS PREPARED BY WILLIAM R. VAN CAMPEN, R.L.S., IN AND FOR THE OFFICES OF BENCH MARK LAND SURVEYING & MAPPING, INC., 4152 WEST BLUE HERON BOULEVARD, SUITE 121, RIVIERA BEACH, FLORIDA

BENCH MARK
LAND SURVEYING & MAPPING, INC.
RIVIERA BEACH, FLORIDA (407) 818-2102
WEST PALM BEACH, FLORIDA (407) 793-9234

Record Plat
Wycliffe Plat Three

0520-009

DRAWN: D.J.M./C.R.	CHECKED: K.S.	DATE:	SHEET
SCALE: 1" = 60'	DATE FILED: 12-24	W.C. 9: P-0800	4 of 11